



Uttar Pradesh Metro Rail Corporation Limited
उत्तर प्रदेश मेट्रो रेल कॉर्पोरेशन लिमिटेड
A joint Venture of Govt. of India and Govt. of Uttar Pradesh

Participant ID	
Participant Name	www.exammix.com
Test Center Name	iON Digital Zone iDZ 2
Test Date	17/04/2021
Test Time	12:00 PM - 2:00 PM
Subject	Station Controller cum Train Operator (SCTO)
Marks Obtained	77.05000
Max Marks	140

Section : Technical

Q.1 ALU, control unit and _____ are the three main units of an 8085 microprocessor.

- Ans
- A. RAM
 - B. registers
 - C. LED display
 - D. ROM

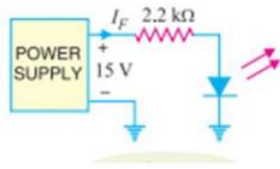
Question Type : MCQ
Question ID : 673502868
Status : Not Answered
Chosen Option : --

Q.2 For an ideal OP-AMP, which of the following is correct?

- Ans
- A. Infinite output impedance and zero open loop gain
 - B. Zero output impedance and infinite open loop gain
 - C. Infinite output impedance and infinite open loop gain
 - D. Zero output impedance and zero open loop gain

Question Type : MCQ
Question ID : 673502921
Status : Not Answered
Chosen Option : --

Q.3 What is the current through the LED in the following circuit, assuming a voltage drop of 2 V across it?



- Ans
- A. 5.27 mA
 - B. 3.72 mA
 - C. 5.91 mA
 - D. 8.72 mA

Question Type : MCQ
 Question ID : 673502886
 Status : Answered
 Chosen Option : 3

Q.4 लैटेंसी, बस के एक सिरे से दूसरे सिरे तक डेटा संचरण में हुई देरी को मापने की युक्ति है। निम्नलिखित में से किस उपकरण (इंस्ट्रूमेंटेशन) बस में सर्वोत्तम लैटेंसी विनिर्देश अर्थात न्यूनतम विलंब होता है?

- Ans
- A. PCI
 - B. ईथरनेट
 - C. USB
 - D. GPIB

Question Type : MCQ
 Question ID : 673502932
 Status : Not Answered
 Chosen Option : --

Q.5 In a pulse-width modulation (PWM) DC-DC converter, the rectangular voltage and current waveforms limit _____.

- Ans
- A. practically operating frequencies
 - B. higher drop at load
 - C. boost of the circuit
 - D. buck of the circuit

Question Type : MCQ
 Question ID : 673502844
 Status : Not Answered
 Chosen Option : --

Q.6 In the context of core type induction furnace, consider the following:

- P) It suffers from pinching effect.
 Q) It is suitable for intermittent service.

- Ans
- A. P is correct, Q is incorrect
 - B. Both P and Q are incorrect
 - C. Both P and Q are correct
 - D. P is incorrect and Q is correct

Question Type : MCQ
 Question ID : 673502854
 Status : Answered
 Chosen Option : 3

Q.7 श्रेणीबद्ध दो कुंडलियों के बीच युग्मन गुणांक का मान 0.5 हैं ताकि समान दिशा और विपरीत दिशा में चुंबकन किया जा सके। कुल प्रेरकत्व के संबंधित मान क्रमशः 1.9 H और 0.7 H हैं। दोनों कुंडलियों के स्व-प्रेरकत्व के मान ज्ञात करें।

- Ans
- A. 0.8 H और 0.6 H
 - B. 0.5 H और 0.9 H
 - C. 0.9 H और 0.4 H
 - D. 0.6 H और 0.5 H

Question Type : MCQ
Question ID : 673502867
Status : Answered
Chosen Option : 3

Q.8 A very standard bus for controlling electronic instruments with a computer is GPIB. Its full form is:

- Ans
- A. General Purpose Input Bus
 - B. General Purpose Infrastructure Bus
 - C. General Purpose Instrument Bus
 - D. General Purpose Interface Bus

Question Type : MCQ
Question ID : 673502931
Status : Answered
Chosen Option : 3

Q.9 गुणवत्ता लागत की निम्न में से किस श्रेणी के अंतर्गत आप 'माप और परीक्षण उपकरण के अंशांकन' को वर्गीकृत करेंगे?

- Ans
- A. अच्छी गुणवत्ता की लागत : रोकथाम की लागत
 - B. अच्छी गुणवत्ता की लागत : मूल्यांकन लागत
 - C. खराब गुणवत्ता की लागत : बाहरी विफलता लागत
 - D. खराब गुणवत्ता की लागत : आंतरिक विफलता की लागत

Question Type : MCQ
Question ID : 673502882
Status : Not Answered
Chosen Option : --

Q.10 'क्षमता मूल्यांकन', निम्न में से किस गुणवत्ता लागत श्रेणी के अंतर्गत आता है?

- Ans
- A. अच्छी गुणवत्ता की लागत : मूल्यांकन लागत
 - B. खराब गुणवत्ता की लागत : आंतरिक विफलता लागत
 - C. खराब गुणवत्ता की लागत : बाह्य विफलता लागत
 - D. अच्छी गुणवत्ता की लागत : रोकथाम लागत

Question Type : MCQ
Question ID : 673502894
Status : Not Answered
Chosen Option : --

Q.11 The register used to store the memory address location of the next instruction to be executed is called:

- Ans A. program counter
 B. address register
 C. accumulator
 D. flags

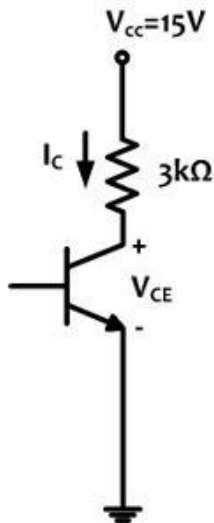
Question Type : MCQ

Question ID : 673502888

Status : Not Answered

Chosen Option : --

Q.12 In the following circuit, if $I_C = 3.5 \text{ mA}$, then V_{CE} is:



- Ans A. 10.5 V
 B. 10 V
 C. 5 V
 D. 4.5 V

Question Type : MCQ

Question ID : 673502929

Status : Answered

Chosen Option : 4

Q.13 If a voltmeter has a scale from -5 V to 15 V and can only read integer values of voltages, its resolution is:

- Ans A. 20 V
 B. -5 V
 C. 1 V
 D. 15 V

Question Type : MCQ

Question ID : 673502902

Status : Not Answered

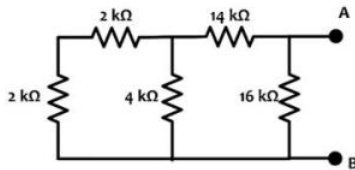
Chosen Option : --

Q.14 The barrier potential of a germanium semiconductor is approximately:

- Ans A. 0.3 V
 B. 1 V
 C. 0.7 V
 D. 1.2 V

Question Type : MCQ
 Question ID : 673502857
 Status : Answered
 Chosen Option : 1

Q.15 प्रतिरोध मापन मोड में एक बहुमापी का उपयोग प्रदत्त परिपथ में अंतस्थों (terminals) A और B पर किया जाता है। 3-डिजिट स्क्रीन पर मापित मान को प्रदर्शित करने के लिए निम्नलिखित में से कौन-सी सर्वोत्तम संयोजन (best setting) है?



- Ans A. 1 Ω
 B. 10 kΩ
 C. 10 MΩ
 D. 1 kΩ

Question Type : MCQ
 Question ID : 673502904
 Status : Answered
 Chosen Option : 2

Q.16 A synchronous motor is said to be _____ and draws a _____ current when the voltage is less than the back EMF.

- Ans A. under excited; lagging
 B. over excited; lagging
 C. under excited; leading
 D. over excited; leading

Question Type : MCQ
 Question ID : 673502849
 Status : Answered
 Chosen Option : 1

Q.17 Which of the following configurations is also called an emitter follower?

- Ans A. Common Base
 B. Common Emitter
 C. Common Collector
 D. Op-Amp

Question Type : MCQ
 Question ID : 673502927
 Status : Answered
 Chosen Option : 3

Q.18 The Fermi level for an intrinsic semiconductor lies:

- Ans
- A. in the conduction band
 - B. in the valance band
 - C. midway in the forbidden gap
 - D. in the boundary of the conduction band and forbidden gap

Question Type : MCQ
Question ID : 673502885
Status : Answered
Chosen Option : 4

Q.19 तीन-फेज प्रेरण मोटर के स्टेटर में प्रति फेज प्रति पोल छह स्लॉट हैं। कुल उत्पादित स्टेटर पोल की संख्या कितनी है?

- Ans
- A. 6
 - B. 12
 - C. 3
 - D. 18

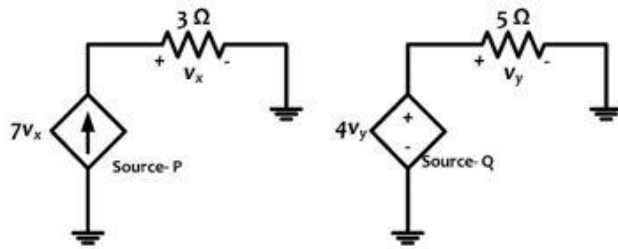
Question Type : MCQ
Question ID : 673502850
Status : Answered
Chosen Option : 2

Q.20 So as to eliminate the effect of lead and contact resistances while measuring low valued resistances, the _____ is used.

- Ans
- A. Kelvin double bridge
 - B. Carey Foster bridge
 - C. Hay's bridge
 - D. Owen's bridge

Question Type : MCQ
Question ID : 673502912
Status : Answered
Chosen Option : 1

Q.21 Which of the following is represented in the given figure?



Ans A.

Source-P is a voltage dependent current source and Source-Q is a voltage dependent voltage source.

B.

Source-P is a current dependent current source and Source-Q is a current dependent voltage source.

C.

Source-P is a voltage dependent current source and Source-Q is a current dependent voltage source.

D.

Source-P is a current dependent current source and Source-Q is a voltage dependent voltage source.

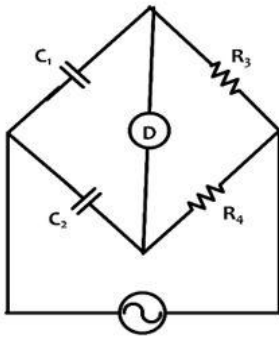
Question Type : MCQ

Question ID : 673502900

Status : Answered

Chosen Option : 1

Q.22 Which of the following options is true for the balanced condition of the given circuit?



Ans

A. $C_1 = \frac{R_3 R_4}{C_2}$

B. $C_2 = \frac{C_1 R_3}{R_4}$

C. $C_2 = \frac{C_1 R_4}{R_3}$

D. $C_1 = C_2 R_3 R_4$

Question Type : MCQ

Question ID : 673502915

Status : Answered

Chosen Option : 3

Q.23 किसी परिपथ में, किसी नोड पर, तीन शाखाएं मिलती हैं। नोड में आने वाली धारा (incoming current) 2 A है और इनमें से दो शाखाओं से जाने वाली धारा (outgoing current) 3 A है। तीसरी शाखा में _____ होगी।

- Ans
- A. जाने वाली धारा 5 A
 - B. आने वाली धारा 5 A
 - C. जाने वाली धारा -1 A
 - D. आने वाली धारा -1 A

Question Type : MCQ
 Question ID : 673502925
 Status : Answered
 Chosen Option : 3

Q.24 The phasor values of voltage and current are:

$$V = 100\angle 30^\circ ; I = 10\angle -45^\circ$$

What is the phase difference between them?

- Ans
- A. 75°
 - B. 45°
 - C. 30°
 - D. 15°

Question Type : MCQ
 Question ID : 673502919
 Status : Answered
 Chosen Option : 1

Q.25 In which of the following modes in 8255A PPI can Port A be used as a bidirectional data bus?

- Ans
- A. BSR Mode
 - B. Mode 2
 - C. Mode 0
 - D. Mode 1

Question Type : MCQ
 Question ID : 673502869
 Status : Not Answered
 Chosen Option : --

Q.26 The 8251A programmable communication chip is designed for:

- Ans
- A. synchronous and asynchronous parallel data communication
 - B. synchronous parallel data communication only
 - C. synchronous serial data communication only
 - D. synchronous and asynchronous serial data communication

Question Type : MCQ
 Question ID : 673502889
 Status : Not Answered
 Chosen Option : --

Q.27 Which of the following materials has an energy gap of more than 3 eV between the valence band and conduction band?

- Ans
- A. Superconductor
 - B. Insulator
 - C. Semiconductor
 - D. Conductor

Question Type : MCQ
Question ID : 673502876
Status : Answered
Chosen Option : 2

Q.28 Which of the following is NOT an automatic control system?

- Ans
- A. Sun tracker solar system
 - B. Thermostat heater
 - C. Electric hand drier
 - D. Voltage stabiliser

Question Type : MCQ
Question ID : 673502871
Status : Answered
Chosen Option : 3

Q.29 Input voltage and input current of a common emitter configuration BJT circuit is:

- Ans
- A. V_{BE} and I_B
 - B. V_{BE} and I_C
 - C. V_{CE} and I_C
 - D. V_{CE} and I_B

Question Type : MCQ
Question ID : 673502906
Status : Answered
Chosen Option : 1

Q.30 Which of the following has the largest number of free electrons?

- Ans
- A. Extrinsic semiconductor
 - B. Intrinsic semiconductor
 - C. Conductor
 - D. Insulator

Question Type : MCQ
Question ID : 673502856
Status : Answered
Chosen Option : 3

Q.31 C फैरड की धारिता वाले दिष्टकारी के साथ उपयोग किए जाने वाले संधारित्र निस्स्यंदक (फिल्टर) द्वारा दिष्ट धारा में _____ प्रतिबाधा दी जाती है।

- Ans
- A. एकक
 - B. $2\pi fC$
 - C. अनंत
 - D. शून्य

Question Type : MCQ
Question ID : 673502858
Status : Answered
Chosen Option : 3

Q.32 The voltage and current of a single phase circuit are related by pair of equations: $2V + 3I = 530$; $V - I = 190$. If the power factor is 0.8, the power of the circuit is:

- Ans
- A. 5.28 kW
 - B. 2.64 kW
 - C. 3.3 kW
 - D. 6.6 kW

Question Type : MCQ
Question ID : 673502918
Status : Answered
Chosen Option : 1

Q.33 Which of the following logical expressions is INCORRECT?

- Ans
- A. $\overline{AB} = \overline{A} + \overline{B}$
 - B. $\overline{A + B} = \overline{A} \overline{B}$
 - C. $AB + A = B$
 - D. $1 + A = 1$

Question Type : MCQ
Question ID : 673502878
Status : Answered
Chosen Option : 3

Q.34 Identify the two-input logic gate with inputs A and B and output Q, whose truth table is given here.

Truth Table		
A	B	Q
0	0	0
0	1	1
1	0	1
1	1	0

- Ans
- A. X-NOR
 - B. NOR
 - C. XOR
 - D. NAND

Question Type : MCQ
Question ID : 673502893
Status : Answered
Chosen Option : 3

Q.35 यदि स्क्रेप मूल्य के बिना अनुमानित जीवन-काल 20 वर्ष है, तो खरीदने और संस्थापना के लिए ₹2,00,000/- की संस्थापना लागत पर कुल वार्षिक शुल्क की गणना करें। ब्याज दर वार्षिक चक्रवृद्धि रूप से 5% है।

- Ans
- A. ₹5760
 - B. ₹10000
 - C. ₹15760
 - D. ₹12250

Question Type : MCQ
Question ID : 673502852
Status : Not Answered
Chosen Option : --

Q.36 The peak inverse voltage (PIV) rating of a half wave rectifier, having a maximum value of input as 100 V, is minimum:

- Ans
- A. 100 V
 - B. 50 V
 - C. $\frac{100}{\sqrt{2}}$ V
 - D. 200 V

Question Type : MCQ
Question ID : 673502907
Status : Answered
Chosen Option : 4

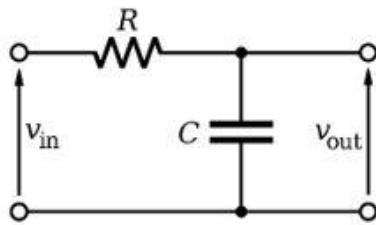
Q.37 निम्न कथनों पर विचार करें और सबसे उपयुक्त विकल्प का चयन करें।

- A: यदि एक ऐमीटर एक परिपथ अवयव (सर्किट एलीमेंट) से जुड़ा हुआ है, तो यह क्षतिग्रस्त हो जाएगा।
B: यदि एक वोल्टमीटर एक परिपथ के साथ श्रेणी में जुड़ा हुआ है, तो यह क्षतिग्रस्त हो जाएगा।

- Ans
- A. A सत्य है, लेकिन B असत्य है।
 - B. दोनों कथन असत्य हैं।
 - C. B सत्य है, लेकिन A असत्य है।
 - D. दोनों कथन सत्य हैं।

Question Type : MCQ
Question ID : 673502901
Status : Answered
Chosen Option : 1

Q.38 The transfer function of the system shown below is:



- Ans
- A. $\frac{V_{out}(s)}{V_{in}(s)} = \frac{C}{RCs + 1}$
 - B. $\frac{V_{out}(s)}{V_{in}(s)} = RCs + 1$
 - C. $\frac{V_{out}(s)}{V_{in}(s)} = \frac{R}{Cs + 1}$
 - D. $\frac{V_{out}(s)}{V_{in}(s)} = \frac{1}{RCs + 1}$

Question Type : MCQ
 Question ID : 673502873
 Status : Not Answered
 Chosen Option : --

Q.39 A current $i(t) = 2 + 8 \sin(\omega t)$ is measured using a moving iron type meter. The value read by it is:

- Ans
- A. 8 A
 - B. $\sqrt{32}$ A
 - C. 6 A
 - D. 2 A

Question Type : MCQ
 Question ID : 673502916
 Status : Answered
 Chosen Option : 3

Q.40 In AC to AC converters, voltage is controlled using forced commutation by _____ .

- Ans
- A. Gate Off Triode Gate Turn-on Triodes
 - B. Gate Bipolar Transistors Gate Terminal Open Thyristors
 - C. Gated Off Transistors Gated Turn-on Transistors
 - D. Gate Turn-off Thyristors (GTO)

Question Type : MCQ
 Question ID : 673502846
 Status : Not Answered
 Chosen Option : --

Q.41 HART is a digital communication protocol for sending and receiving information. It uses which of the following current loop standards?

- Ans A. 120 - 140 mA
 B. 4 - 20 mA
 C. 50 - 80 mA
 D. 40 - 100 mA

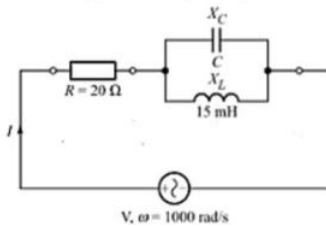
Question Type : MCQ
 Question ID : 673502923
 Status : Not Answered
 Chosen Option : --

Q.42 In an asynchronous counter using D flip-flop, which of the following is true?

- Ans A. Output of one flop is given as the clock to the next flip-flop.
 B. Clock signal is derived from independent signal generators.
 C. Same clock signal is given to all flip-flops.
 D. Alternate flip-flops are given the same clock signal.

Question Type : MCQ
 Question ID : 673502884
 Status : Answered
 Chosen Option : 1

Q.43 In series with a parallel combination of a capacitor and inductor, a resistor of $20\ \Omega$ (as shown in the given figure) is connected. If the current drawn from the supply is lagging voltage by 45° and the angular frequency is $1000\ \text{rad/s}$, the value of capacitance is _____.



- Ans A. $8.67\ \mu\text{F}$
 B. $13.33\ \mu\text{F}$
 C. $12.33\ \mu\text{F}$
 D. $16.67\ \mu\text{F}$

Question Type : MCQ
 Question ID : 673502865
 Status : Not Answered
 Chosen Option : --

Q.44 An 8086 microprocessor is designed to have _____ data lines and _____ address lines.

- Ans A. 16; 16
 B. 12; 16
 C. 20; 16
 D. 16; 20

Question Type : MCQ
 Question ID : 673502883
 Status : Answered
 Chosen Option : 1

Q.45 Which of the following statements is FALSE regarding semiconductor devices?

- Ans
- A. Current and electrons move opposite to each other
 - B. Holes are majority charge carriers in p-type semiconductors
 - C. Electrons and holes move opposite to each other
 - D. Current and holes move opposite to each other

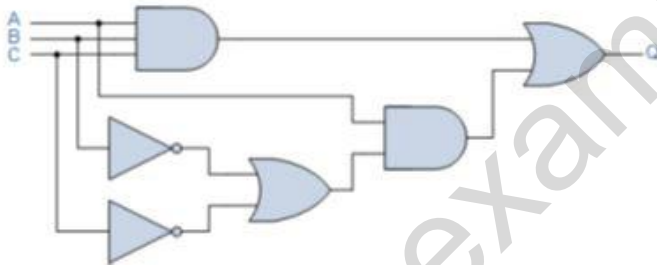
Question Type : MCQ
 Question ID : 673502905
 Status : Answered
 Chosen Option : 4

Q.46 एक सामान्य आधार संयोजन में, यदि धारा प्रवर्धन गुणक 0.9 है और उत्सर्जक धारा 1 mA है, तो आधार धारा ज्ञात करें।

- Ans
- A. 0.1 mA
 - B. 1.11 mA
 - C. 0.9 mA
 - D. 1.9 mA

Question Type : MCQ
 Question ID : 673502862
 Status : Answered
 Chosen Option : 1

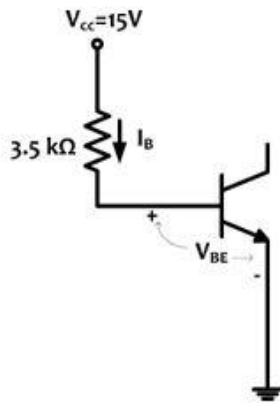
Q.47 What is the simplified logical expression of the given diagram?



- Ans
- A. $Q = ABC + A\bar{B} + A\bar{C}$
 - B. $Q = ABC + A(B + C)$
 - C. $Q = ABC + A\bar{B} + A\bar{C}$
 - D. $Q = AB + A\bar{B} + A\bar{C}$

Question Type : MCQ
 Question ID : 673502881
 Status : Answered
 Chosen Option : 1

Q.48 In the given circuit, if $V_{BE} = 1V$, then I_B is:



- Ans
- A. 0.4 mA
 - B. 0.2 mA
 - C. 2 mA
 - D. 4 mA

Question Type : MCQ

Question ID : 673502910

Status : Answered

Chosen Option : 4

Q.49 If semiconductor M has a knee voltage of 0.7 V, whereas semiconductor N has a knee voltage of 0.3 V, then:

- Ans
- A. M is silicon; N is germanium
 - B. M is silicon; N is germanium arsenide
 - C. M is germanium arsenide; N is silicon
 - D. M is germanium; N is silicon

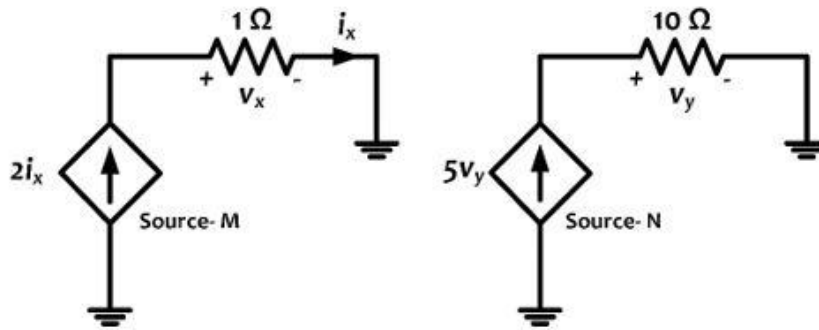
Question Type : MCQ

Question ID : 673502908

Status : Answered

Chosen Option : 1

Q.50 Which of following is represented in the given figure?



Ans A.

Source-M is a voltage dependent current source and Source-N is a voltage dependent current source.

B.

Source-M is a voltage dependent current source and Source-N is a current dependent current source.

C.

Source-M is a current dependent current source and Source-N is a voltage dependent current source.

D.

Source-M is a current dependent current source and Source-N is a voltage dependent voltage source.

Question Type : MCQ

Question ID : 673502926

Status : Answered

Chosen Option : 3

Q.51 Average value of the waveform shown below is _____.



Ans A. 10 V

B. 3.33 V

C. 6.67 V

D. 20 V

Question Type : MCQ

Question ID : 673502887

Status : Answered

Chosen Option : 4

Q.52 Which of the following devices is called a 'voltage-controlled capacitor'?

Ans A. LED

B. Shockley diode

C. Photo diode

D. Varactor diode

Question Type : MCQ

Question ID : 673502861

Status : Answered

Chosen Option : 4

Q.53 A moving coil instrument having $50\ \Omega$ resistance shows full-scale deflection with 2 mA. If a resistance of $0.2\ \Omega$ is added in parallel to extend its range, then its range is extended to:

- Ans
- A. 251 mA
 - B. 1002 mA
 - C. 202 mA
 - D. 502 mA

Question Type : MCQ
 Question ID : 673502903
 Status : Answered
 Chosen Option : 4

Q.54 Which of the following is the normal cell voltage of a lithium ion battery?

- Ans
- A. 1.5 V
 - B. 3.6 V
 - C. 1.2 V
 - D. 2.5 V

Question Type : MCQ
 Question ID : 673502866
 Status : Answered
 Chosen Option : 4

Q.55 Which of the following is the correct formula for form factor of an alternating voltage waveform?

- Ans
- A. $\frac{\text{average value}}{\text{rms value}}$
 - B. $\frac{\text{rms value}}{\text{average value}}$
 - C. $\frac{\text{peak value}}{\text{average value}}$
 - D. $\frac{\text{rms value}}{\text{peak value}}$

Question Type : MCQ
 Question ID : 673502864
 Status : Answered
 Chosen Option : 2

Q.56 Which of the following is NOT a time domain specification of a second order system?

- Ans
- A. Rise time
 - B. Settling time
 - C. Maximum overshoot
 - D. Time constant

Question Type : MCQ
 Question ID : 673502874
 Status : Not Answered
 Chosen Option : --

Q.57 During the testing of an energy meter, what are the required voltage and current conditions for a creep test?

- Ans
- A. Applied voltage: 110% of marked value of voltage; Applied current: 0.5% of marked value of current
 - B. Applied voltage: marked value of voltage; Applied current: open circuit
 - C. Applied voltage: marked value of voltage; Applied current: 0.5% of marked value of current
 - D. Applied voltage: 110% of marked value of voltage; Applied current: open circuit

Question Type : MCQ
Question ID : 673502917
Status : Not Answered
Chosen Option : --

Q.58 When the gate signal is removed in a thyristor, it will remain in its forward conduction mode. This characteristic of the thyristor is called _____.

- Ans
- A. GATE-on
 - B. latching
 - C. off blocking
 - D. ever conducting

Question Type : MCQ
Question ID : 673502843
Status : Answered
Chosen Option : 2

Q.59 For a 20-kVA transformer, the iron and copper losses at full load are 300 W and 250 W, respectively. What is the transformer efficiency under full load at unity power factor?

- Ans
- A. 97.32%
 - B. 48.66%
 - C. 98.52%
 - D. 98.76%

Question Type : MCQ
Question ID : 673502848
Status : Answered
Chosen Option : 1

Q.60 In an 8086 microprocessor, in order to enable higher order byte of data, _____ signal is used.

- Ans
- A. \overline{DEN}
 - B. DT/R
 - C. ALE
 - D. \overline{BHE}

Question Type : MCQ
Question ID : 673502895
Status : Not Answered
Chosen Option : --

Q.61 To optimise the economic limit, power factor is improved by installing _____.

- Ans
- A. kVA rating devices
 - B. transformers
 - C. static capacitors
 - D. energy meters

Question Type : MCQ
 Question ID : 673502853
 Status : Answered
 Chosen Option : 3

Q.62 Number of NAND gates required to realise a half adder circuit is _____.

- Ans
- A. five
 - B. three
 - C. six
 - D. four

Question Type : MCQ
 Question ID : 673502879
 Status : Answered
 Chosen Option : 1

Q.63 Starting just after unknown resistance, if three known resistances of Kelvin's bridge are X , $2X$ and $4X$, respectively, then the value of unknown resistance is:

- Ans
- A. X
 - B. $2X$
 - C. $\frac{X}{2}$
 - D. $8X$

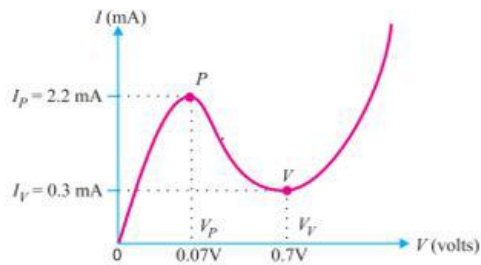
Question Type : MCQ
 Question ID : 673502913
 Status : Not Answered
 Chosen Option : --

Q.64 If semiconductor X has an energy band gap of 0.67 eV, whereas semiconductor Y has an energy band gap of 1.1 eV, then:

- Ans
- A. X is germanium arsenide; Y is silicon
 - B. X is silicon; Y is germanium
 - C. X is silicon; Y is germanium arsenide
 - D. X is germanium; Y is silicon

Question Type : MCQ
 Question ID : 673502928
 Status : Answered
 Chosen Option : 4

Q.65 Identify the device whose V-I characteristics are shown in the given image.



- Ans
- A. MOSFET
 - B. Tunnel diode
 - C. LED
 - D. Photo diode

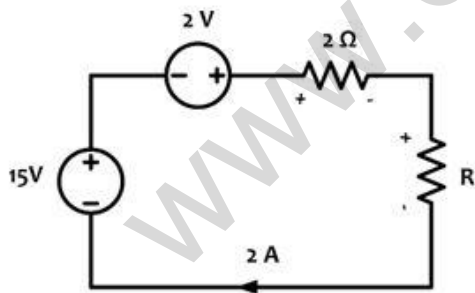
Question Type : MCQ
 Question ID : 673502859
 Status : Answered
 Chosen Option : 2

Q.66 Which of the following is an automatic control system?

- Ans
- A. Autonomous car
 - B. Hair dryer
 - C. Electric hand drier
 - D. TV remote control

Question Type : MCQ
 Question ID : 673502891
 Status : Answered
 Chosen Option : 1

Q.67 In the given figure, the voltage across R is:



- Ans
- A. 21 V
 - B. 13 V
 - C. 9 V
 - D. 17 V

Question Type : MCQ
 Question ID : 673502899
 Status : Answered
 Chosen Option : 2

Q.68 The DC voltage transfer of a push-pull converter is _____.

- Ans
- A. n/D ; D: duty cycle, n: ratio of primary to secondary winding
 - B. $2D/n$; D: duty cycle, n: ratio of primary to secondary winding
 - C. D/n ; D: duty cycle, n: ratio of primary to secondary winding
 - D. $2n/D$; D: duty cycle, n: ratio of primary to secondary winding

Question Type : MCQ
Question ID : 673502845
Status : Not Answered
Chosen Option : --

Q.69 For an ideal OP-AMP, which of the following is correct?

- Ans
- A. Zero input impedance and infinite bandwidth
 - B. Infinite input impedance and infinite bandwidth
 - C. Infinite input impedance and zero bandwidth
 - D. Zero input impedance and zero bandwidth

Question Type : MCQ
Question ID : 673502930
Status : Answered
Chosen Option : 2

Q.70 Energy lost due to hysteresis during each cycle in the core of a transformer working at 50 Hz is 6 J. What will be the power loss due to hysteresis?

- Ans
- A. 300 W
 - B. 100 W
 - C. 600 W
 - D. 200 W

Question Type : MCQ
Question ID : 673502877
Status : Answered
Chosen Option : 1

Q.71 A voltmeter has a scale from -15 V to 5 V . Its span is:

- Ans
- A. 20 V
 - B. 5 V
 - C. -15 V
 - D. 15 V

Question Type : MCQ
Question ID : 673502898
Status : Answered
Chosen Option : 1

Q.72 A consumer has five lamps of 40 W each and two fans of 300 W each. On an average, he uses the appliances for five hours a day. Find the energy consumption for the month of April.

- Ans
- A. 124 kWh
 - B. 120 kWh
 - C. 60 kWh
 - D. 62 kWh

Question Type : MCQ
Question ID : 673502851
Status : Answered
Chosen Option : 2

Q.73 Which of the following materials is used in resistance thermometers?

- Ans
- A. Gold
 - B. Nichrome
 - C. Platinum
 - D. Kanthal

Question Type : MCQ
Question ID : 673502875
Status : Answered
Chosen Option : 3

Q.74 The material used as an electric heating element is:

- Ans
- A. aluminium
 - B. nichrome
 - C. tungsten
 - D. copper

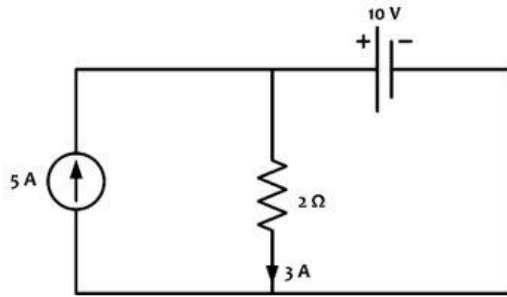
Question Type : MCQ
Question ID : 673502892
Status : Answered
Chosen Option : 2

Q.75 A shift register using flip-flops is called a _____.

- Ans
- A. dynamic shift register
 - B. flip-flop shift register
 - C. universal shift register
 - D. static shift register

Question Type : MCQ
Question ID : 673502896
Status : Not Answered
Chosen Option : --

Q.76 दिए गए परिपथ में 10 V स्रोत द्वारा अवशोषित शक्ति (power) ज्ञात करें।



- Ans
- A. 50 W
 - B. 30 W
 - C. 20 W
 - D. 10 W

Question Type : MCQ
 Question ID : 673502897
 Status : Answered
 Chosen Option : 3

Q.77 If the deflecting torque is A, controlling torque is B and damping torque is C, then for an indicating type instrument:

- Ans
- A. B = C
 - B. A = B
 - C. A = C
 - D. A + C = B

Question Type : MCQ
 Question ID : 673502911
 Status : Answered
 Chosen Option : 4

Q.78 Once a signal is sensed, before transmitting, many a times linear or non-linear operations are performed on the signal. This process is known as:

- Ans
- A. impedance matching
 - B. signal conditioning
 - C. data termination
 - D. data manipulation

Question Type : MCQ
 Question ID : 673502920
 Status : Not Answered
 Chosen Option : --

Q.79 A JFET has a drain current of 5 mA. If $I_{DSS} = 10 \text{ mA}$ and $V_{GS(\text{cut off})} = -6 \text{ V}$, the value of V_{GS} will be:

- Ans A. -1.76 V
 B. 3.16 V
 C. -3.16 V
 D. 1.76 V

Question Type : MCQ
Question ID : 673502863
Status : Not Answered
Chosen Option : --

Q.80 In a thyristor converter drive, during _____ the firing angle is maintained to achieve controlled and predictable deceleration at all times.

- Ans A. braking
 B. controlled modulation
 C. surging
 D. chopping

Question Type : MCQ
Question ID : 673502855
Status : Not Answered
Chosen Option : --

Q.81 For contactless body temperature measurement, advanced thermometers are used. They are based on:

- Ans A. infrared radiation
 B. ultra-violet radiation
 C. laser beams
 D. alpha particles

Question Type : MCQ
Question ID : 673502922
Status : Answered
Chosen Option : 1

Q.82 Which of the following instrument control buses is called 'IEEE-488 bus'?

- Ans A. USB
 B. Ethernet
 C. PCI
 D. GPIB

Question Type : MCQ
Question ID : 673502924
Status : Not Answered
Chosen Option : --

Q.83 The value of a series resistor to be connected in series to limit the current through a LED to 20 mA, assuming a forward voltage of 1.6 V when connected to a 10 V supply, is:

- Ans A. 420 Ω
 B. 260 Ω
 C. 240 Ω
 D. 620 Ω

Question Type : MCQ
Question ID : 673502860
Status : Answered
Chosen Option : 1

Q.84 The gray code equivalent of the decimal number 5 is _____.

- Ans A. 1000
 B. 1100
 C. 0101
 D. 0111

Question Type : MCQ
Question ID : 673502880
Status : Answered
Chosen Option : 4

Q.85 What is the average value of output of a chopper with duty ratio 0.5 and source voltage 50 V?

- Ans A. 200 V
 B. 25 V
 C. 100 V
 D. 50 V

Question Type : MCQ
Question ID : 673502847
Status : Not Answered
Chosen Option : --

Q.86 Which of the following statements is correct regarding bridges available for inductance measurement?

- Ans A. Hay's bridge is used for coils having $Q < 10$, whereas Anderson's bridge is used for very high Q coils.
 B. Hay's bridge is used for coils having $Q > 10$, whereas Maxwell's bridge is used for very high Q coils.
 C. Hay's bridge is used for coils having $Q > 10$, whereas Maxwell's bridge is used for coils having $1 < Q < 10$.
 D. Hay's bridge is used for coils having $Q < 10$, whereas Anderson's bridge is used for very low Q coils.

Question Type : MCQ
Question ID : 673502914
Status : Not Answered
Chosen Option : --

Q.87 Which of the following will be done in an 8085 microprocessor when an instruction LXI H 2070H is executed?

- Ans
- A. 2070H is loaded in H register.
 - B. 70 H is loaded in H register and 20 H is loaded in L register.
 - C. Content of the memory 2070H is loaded in H register.
 - D. 20 H is loaded in H register and 70 H is loaded in L register.

Question Type : MCQ
 Question ID : 673502870
 Status : Not Answered
 Chosen Option : --

Q.88 In 8085 microprocessors, MVI A, 23H is an example of which addressing mode?

- Ans
- A. Indirect addressing
 - B. Immediate addressing
 - C. Direct addressing
 - D. Register addressing

Question Type : MCQ
 Question ID : 673502890
 Status : Not Answered
 Chosen Option : --

Q.89 The final value of a system whose transfer function is represented by $F(s) = \frac{s+1}{s^2+2s+5}$ is:

- Ans
- A. 0.2
 - B. 0
 - C. unity
 - D. infinity

Question Type : MCQ
 Question ID : 673502872
 Status : Not Answered
 Chosen Option : --

Q.90 For a BJT, if the collector and emitter currents are 147 mA and 150 mA, respectively, then the current ratio (β) is:

- Ans
- A. 0.98
 - B. 49
 - C. 98
 - D. 0.49

Question Type : MCQ
 Question ID : 673502909
 Status : Answered
 Chosen Option : 2

Section : Numerical and logical reasoning questions

Q.1 Select the option that is related to the third number in the same way as the second number is related to the first number.

169 : 13 :: 361 : ?

- Ans
- A. 17
 - B. 20
 - C. 19
 - D. 18

Question Type : MCQ
 Question ID : 673502946
 Status : Answered
 Chosen Option : 3

Q.2 Select the option that will fill in the blank and complete the given series.

132, 66, 66, _____, 198, 495

- Ans
- A. 121
 - B. 88
 - C. 99
 - D. 72

Question Type : MCQ
 Question ID : 673502952
 Status : Answered
 Chosen Option : 3

Q.3 एक सुबह, लावण्या और चेरी एक क्रॉसिंग पर एक-दूसरे से आमने-सामने बात कर रहे थे। यदि चेरी की छाया लावण्या के ठीक दाईं ओर पड़ रही थी, तो लावण्या का मुँह किस दिशा में था?

- Ans
- A. दक्षिण
 - B. पूर्व
 - C. उत्तर
 - D. पश्चिम

Question Type : MCQ
 Question ID : 673502938
 Status : Answered
 Chosen Option : 1

Q.4 Study the given pattern carefully and select the number that can replace the question mark (?) in it.



- Ans
- A. 22
 - B. 29
 - C. 15
 - D. 18

Question Type : MCQ
 Question ID : 673502949
 Status : Answered
 Chosen Option : 4

Q.5 P is the sister of Q, R is the mother of Q, and S is the father of R. How is P related to S?

- Ans
- A. Mother
 - B. Grandmother
 - C. Daughter
 - D. Granddaughter

Question Type : MCQ
Question ID : 673502933
Status : Answered
Chosen Option : 4

Q.6 Study the given pattern carefully and select the number that can replace the question mark (?) in it.

4	52	6
3	25	4
7	?	1

- Ans
- A. 64
 - B. 36
 - C. 8
 - D. 50

Question Type : MCQ
Question ID : 673502948
Status : Answered
Chosen Option : 4

Q.7 Select the number from among the given options that can replace the question mark (?) in the following series.

4, 5, 12, 39, 160, ?

- Ans
- A. 805
 - B. 292
 - C. 640
 - D. 350

Question Type : MCQ
Question ID : 673502942
Status : Answered
Chosen Option : 1

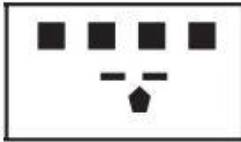
Q.8 Select the figure from the options that can replace the question mark (?) and complete the series.



(A) (B) (C) (D)

Ans

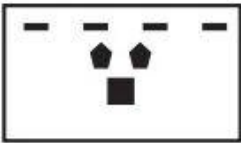
A.



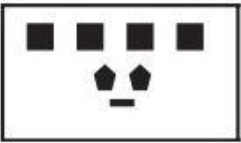
B.



C.



D.



Question Type : MCQ

Question ID : 673502939

Status : Answered

Chosen Option : 1

Q.9 Six friends are sitting in a circle and are facing the centre of the circle. Gagan is between Suraj and Tushar. Ratnesh is between Mukesh and Mayur. Suraj is to the left of Mukesh. Who is second to the right of Gagan?

Ans A. Tushar

B. Mayur

C. Mukesh

D. Suraj

Question Type : MCQ

Question ID : 673502936

Status : Answered

Chosen Option : 3

Q.10 Select the number from among the given options that can replace the question mark (?) in the following series.

12, 15, 19, 24, 30, ?

Ans A. 37

B. 36

C. 38

D. 35

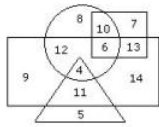
Question Type : MCQ

Question ID : 673502941

Status : Answered

Chosen Option : 1

Q.11 In the given diagram, the circle represents post-graduate doctors, the rectangle represents doctors who work in government hospitals, the square represents doctors who work in private hospitals and the triangle represents graduate doctors.



According to the diagram, identify the number showing doctors who are graduate, post-graduate and working in government hospitals but NOT working in private hospitals.

- Ans
- A. 12
 - B. 6
 - C. 11
 - D. 4

Question Type : MCQ
 Question ID : 673502940
 Status : Answered
 Chosen Option : 4

Q.12 एक सुबह, रामप्यारी दक्षिण की ओर 7 किमी चलती है और फिर अपनी दाईं ओर मुड़ जाती है। 6 किमी चलने के बाद, वह अपनी बाईं ओर मुड़ कर 9 किमी चलती है। फिर, वह अपनी दाईं ओर मुड़ कर 2 किमी चलती है। अब वह अपने प्रारंभ बिंदु से किस दिशा में है?

- Ans
- A. दक्षिण
 - B. पश्चिम
 - C. उत्तर - पश्चिम
 - D. दक्षिण - पश्चिम

Question Type : MCQ
 Question ID : 673502937
 Status : Answered
 Chosen Option : 4

Q.13 Which of the following is true for the equation $6y - 8 \geq 7$?

- Ans
- A. $y \leq \frac{5}{2}$
 - B. $y \geq \frac{5}{2}$
 - C. $y > 15$
 - D. $y \geq \frac{7}{2}$

Question Type : MCQ
 Question ID : 673502950
 Status : Answered
 Chosen Option : 2

Q.14 Which of the following is true for the equation $8x - 6 > 2x + 4$?

Ans

A. $x \geq \frac{5}{3}$

B. $x < \frac{5}{3}$

C. $x > \frac{5}{3}$

D. $x > \frac{3}{5}$

Question Type : MCQ

Question ID : 673502951

Status : Answered

Chosen Option : 3

Q.15 Read the given information carefully and answer the following question.

- 1) A + B means A is the son of B.
- 2) A × B means A is the father of B.
- 3) A - B means A is the sister of B.

Which of the following relations shows that Q is the grandfather of S?

A. $P + Q - R \times S$

B. $P + Q \times R \times S$

C. $Q - P \times R - S$

D. $Q + P \times R \times S$

Question Type : MCQ

Question ID : 673502934

Status : Answered

Chosen Option : 2

Q.16 Select the option that is related to the third number in the same way as the second number is related to the first number.

429 : 555 :: 842 : ?

A. 984

B. 962

C. 1008

D. 293

Question Type : MCQ

Question ID : 673502947

Status : Answered

Chosen Option : 4

Q.17 R, P और J पुरुष हैं, और C, S एवं T महिलाएँ हैं। वे दो अलग-अलग पंक्तियों में इस तरह बैठे हैं कि पुरुषों का मुँह महिलाओं की ओर है।

R और C विकर्णतः एक-दूसरे के सम्मुख हैं।
J किसी भी छोर पर नहीं बैठा है।
C के बाएँ T बैठी है।

बताएँ कि J के सम्मुख कौन बैठा/बैठी है?

- Ans
- A. C
 - B. P
 - C. T
 - D. S

Question Type : MCQ
Question ID : 673502935
Status : Answered
Chosen Option : 3

Q.18 Select the number from among the given options that can replace the question mark (?) in the following series.

20, 22, 27, 38, 55, ?

- Ans
- A. 78
 - B. 72
 - C. 76
 - D. 74

Question Type : MCQ
Question ID : 673502943
Status : Answered
Chosen Option : 1

Q.19 Select the option that is related to the third number in the same way as the second number is related to the first number.

6 : 36 :: 12 : ?

- Ans
- A. 36
 - B. 120
 - C. 144
 - D. 84

Question Type : MCQ
Question ID : 673502945
Status : Answered
Chosen Option : 3

Q.20 Select the number from among the given options that can replace the question mark (?) in the following series.

6, 4, 10, 7, ?, 10, 30, 13

- Ans
- A. 16
 - B. 18
 - C. 9
 - D. 17

Question Type : MCQ
Question ID : 673502944
Status : Answered
Chosen Option : 2

Section : Computer Application

Q.1 इंटरनेट से जुड़े कंप्यूटरों के बीच फ़ाइल स्थानांतरण के लिए निम्नलिखित में से किस प्रोटोकॉल का उपयोग किया जाता है?

- Ans
- A. FTP (एफ़टीपी)
 - B. SMTP (एसएमटीपी)
 - C. TELNET (टेलनेट)
 - D. HTTP (एचटीटीपी)

Question Type : MCQ
Question ID : 673502972
Status : Answered
Chosen Option : 1

Q.2 Which of the following is NOT a web browser?

- Ans
- A. Internet Explorer
 - B. Chrome
 - C. Baidu
 - D. Safari

Question Type : MCQ
Question ID : 673502968
Status : Answered
Chosen Option : 3

Q.3 MS-Excel में, सेल में पाठ्य, संख्या और दिनांक हो सकते हैं। सेल में संख्याओं का डिफ़ॉल्ट संरेखण क्या है?

- Ans
- A. समकरण (जस्टिफ़ाई)
 - B. बाएँ
 - C. केंद्र
 - D. दाएँ

Question Type : MCQ
Question ID : 673502964
Status : Not Answered
Chosen Option : --

Q.4 Which of the following key combinations can be used to start a slideshow in MS-PowerPoint 2016 from the current slide?

- Ans
- A. Shift + F5
 - B. Ctrl + F4
 - C. Shift + F4
 - D. Ctrl + F5

Question Type : MCQ
Question ID : 673502966
Status : Not Answered
Chosen Option : --

Q.5 What is the length of an IPv4 address?

- Ans
- A. 16 bits
 - B. 8 bytes
 - C. 24 bits
 - D. 8 nibbles

Question Type : MCQ
Question ID : 673502971
Status : Not Answered
Chosen Option : --

Q.6 Which of the following hardware units directs operations within a computer's processor?

- Ans
- A. Input-Output port
 - B. RAM
 - C. Control Unit (CU)
 - D. Arithmetic and Logic Unit (ALU)

Question Type : MCQ
Question ID : 673502954
Status : Answered
Chosen Option : 1

Q.7 Which of the following is used to convert a file into a portable format?

- Ans
- A. Antivirus
 - B. Acrobat Writer
 - C. Web browser
 - D. WinZip software

Question Type : MCQ
Question ID : 673502960
Status : Not Answered
Chosen Option : --

Q.8 What does the letter 'S' in HTTPS stand for?

- Ans
- A. Secure
 - B. Seamless
 - C. Synchronous
 - D. Service

Question Type : MCQ
Question ID : 673502969
Status : Answered
Chosen Option : 4

Q.9 निम्नलिखित में से कौन-सा (से) कथन सही है (हैं)?

- (i) MS-Word दस्तावेज़ में, शून्य या अधिक तालिकाएँ हो सकती हैं।
(ii) MS-Word दस्तावेज़ में, 'Enter' कुंजी का उपयोग करके पैराग्राफ बनाए जाते हैं।

- Ans
- A. (i) और (ii) दोनों
 - B. न तो (i) न ही (ii)
 - C. केवल (ii)
 - D. केवल (i)

Question Type : MCQ
Question ID : 673502967
Status : Not Answered
Chosen Option : --

Q.10 Which of the following allows to connect hardware devices such as mouse and keyboard to your computer?

- Ans
- A. AGP slot
 - B. Capacitor
 - C. USB port
 - D. Power connector

Question Type : MCQ
Question ID : 673502955
Status : Answered
Chosen Option : 3

Q.11 Which of the following is an example of an application software?

- Ans
- A. Windows
 - B. Linux
 - C. WordPad
 - D. Unix

Question Type : MCQ
Question ID : 673502958
Status : Answered
Chosen Option : 3

Q.12 Which of the following keyboard shortcuts is used to open the 'History' page in a new tab in Google Chrome?

- Ans
- A. Alt + H
 - B. Ctrl + Y
 - C. Ctrl + T
 - D. Ctrl + H

Question Type : MCQ
Question ID : 673502970
Status : Answered
Chosen Option : 1

Q.13 Which of the following is a non-impact printer?

- Ans
- A. Daisy wheel printer
 - B. Dot-matrix printer
 - C. Drum printer
 - D. Inkjet printer

Question Type : MCQ
Question ID : 673502957
Status : Not Answered
Chosen Option : --

Q.14 विंडोज के संबंध में निम्न में से कौन सा कथन असत्य/गलत है?

- Ans
- A. डेस्कटॉप की निचली क्षैतिज रेखा (बॉटम होरिजॉटल लाइन) को टास्कबार कहा जाता है।
 - B. विंडोज सिस्टम में, डिलीट गए आइटम अस्थायी रूप से रिसायकल बिन में संग्रहीत हो जाते हैं।
 - C. विंडोज 10 मल्टीटास्किंग को सपोर्ट नहीं करता है।
 - D. विंडोज सिस्टम की बूटिंग प्रक्रिया के बाद, दिखाई देने वाली पहली स्क्रीन को डेस्कटॉप कहा जाता है।

Question Type : MCQ
Question ID : 673502959
Status : Answered
Chosen Option : 3

Q.15 CPU, RAM, hard drive and ports for input and output devices in a computer system are all located on the _____.

- Ans
- A. ROM
 - B. keyboard
 - C. motherboard
 - D. RAM

Question Type : MCQ
Question ID : 673502953
Status : Answered
Chosen Option : 3

Q.16 Which of the following keyboard shortcuts can be used to Center Align paragraphs in an MS-Word 2016 document?

- Ans
- A. At + C
 - B. Ctrl + J
 - C. Ctrl + E
 - D. Ctrl + C

Question Type : MCQ
Question ID : 673502963
Status : Not Answered
Chosen Option : --

Q.17 Microsoft Word is a:

- Ans
- A. graphics software
 - B. word processor
 - C. language processor
 - D. compression software

Question Type : MCQ
Question ID : 673502962
Status : Answered
Chosen Option : 2

Q.18 Which of the following is NOT a valid absolute cell address in MS-Excel?

- Ans
- A. \$AZ\$10
 - B. \$AB\$1
 - C. \$AA\$5
 - D. \$A5\$

Question Type : MCQ
Question ID : 673502965
Status : Not Answered
Chosen Option : --

Q.19 Which of the following statements is/are FALSE?

- (i) Windows operating systems support GUI.
(ii) Unix is a multiuser operating system.

- Ans
- A. Both (i) and (ii)
 - B. Only (i)
 - C. Only (ii)
 - D. Neither (i) nor (ii)

Question Type : MCQ
Question ID : 673502961
Status : Not Answered
Chosen Option : --

Q.20 Which of the following is NOT an output device?

- Ans A. Plotter
 B. Microphone
 C. VDU
 D. Printer

Question Type : MCQ
Question ID : 673502956
Status : Answered
Chosen Option : 2

Section : GK Awareness

Q.1 किस भारतीय राज्य की सीमा चार देशों के साथ लगती है अर्थात पश्चिम में भूटान, पूर्व में म्यांमार, उत्तर में तिब्बत और चीन?

- Ans A. झारखंड
 B. ओडिशा
 C. अरुणाचल प्रदेश
 D. मिज़ोरम

Question Type : MCQ
Question ID : 673502973
Status : Answered
Chosen Option : 4

Q.2 2020 के नोबल शांति पुरस्कार से किसे सम्मानित किया गया है?

- Ans A. विश्व स्वास्थ्य संगठन
 B. विश्व बैंक
 C. ग्लोबल ग्रीन ग्रोथ इंस्टीट्यूट
 D. विश्व खाद्य कार्यक्रम

Question Type : MCQ
Question ID : 673502982
Status : Answered
Chosen Option : 4

Q.3 Which country hosted the World Wrestling Championship in 1967?

- Ans A. United states
 B. Japan
 C. India
 D. Turkey

Question Type : MCQ
Question ID : 673502976
Status : Not Answered
Chosen Option : --

Q.4 Which Bollywood actor helped thousands of migrant workers, stranded by the Covid-19 lockdown in Mumbai, return home?

- Ans
- A. Abhishek Bachhan
 - B. Bobby Deol
 - C. Sonu Sood
 - D. Ayusman Khurana

Question Type : MCQ
Question ID : 673502981
Status : Answered
Chosen Option : 3

Q.5 In which year was the Basketball Federation of India set up?

- Ans
- A. 1950
 - B. 1948
 - C. 1949
 - D. 1953

Question Type : MCQ
Question ID : 673502975
Status : Not Answered
Chosen Option : --

Q.6 प्रमुख रूप से बंगाल में ईस्ट इंडिया कंपनी के क्षेत्रों को नियंत्रित करने के लिए ब्रिटिश संसद द्वारा निम्नलिखित में से कौन-सा अधिनियम पारित किया गया था?

- Ans
- A. 1858 का अधिनियम
 - B. 1773 का विनियमन अधिनियम
 - C. भारत सरकार अधिनियम 1919
 - D. पिट का भारत अधिनियम 1784

Question Type : MCQ
Question ID : 673502974
Status : Answered
Chosen Option : 4

Q.7 भारत सरकार ने 'कार्यालय जापान' द्वारा एक आदेश कब जारी किया जो केंद्रीय सेवाओं और सार्वजनिक उपक्रमों में नौकरियों के लिए सामाजिक और शैक्षणिक रूप से पिछड़े वर्गों को 27% आरक्षण का प्रावधान करता है?

- Ans
- A. 13 अगस्त 1990
 - B. 2 अक्टूबर 1990
 - C. 15 नवंबर 1990
 - D. 1 जनवरी 1990

Question Type : MCQ
Question ID : 673502977
Status : Not Answered
Chosen Option : --

Q.8 Origami, the art of paper folding, is famous in:

- Ans A. Japan
 B. Malaysia
 C. The US
 D. Canada

Question Type : MCQ
Question ID : 673502979
Status : Answered
Chosen Option : 1

Q.9 Who won the Australian Open 2021 men's title?

- Ans A. Novak Djokovic
 B. Daniil Medvedev
 C. Rafael Nadal
 D. Stefanos Tsitsipas

Question Type : MCQ
Question ID : 673502980
Status : Not Answered
Chosen Option : --

Q.10 इनमें से कौन सा तमिलनाडु में पोंगल के दौरान आयोजित होने वाला लोकप्रिय बुल टैमिंग (यानी सांड को पकड़ने वाला) खेल है?

- Ans A. नाट्यांजलि
 B. चित्री राय उत्सव
 C. महामहम
 D. जल्लीकट्टू

Question Type : MCQ
Question ID : 673502978
Status : Answered
Chosen Option : 4